



R82<sup>®</sup>

# R82 Heron

Simple design, clean appearance with multiple functionalities

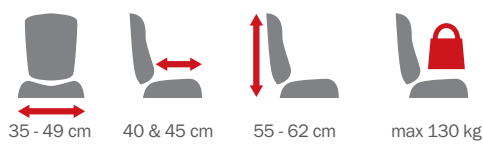


R82<sup>®</sup>  
POWER

# Heron

The **Heron** is a state of the art toilet and bathing seat. The simple design and clean appearance feature multiple functionalities that improve both the user and caregiver experience.

The Heron sets new standards for users with special needs for positioning. The seat is ergonomically correct, meaning it can be tilted and the back reclined without any disadvantage for the user. Clever design means that during recline, the anatomical pivot point at the axis of the hips is maintained. This provides the user more comfort when seated.



# Yes - it is ok to make it easy

The Heron comes in one size and is delivered with a narrow backrest for freedom of movement. For added support and comfort, swing-away side supports or upholstered sides which support the shoulders can be added. We recommend to always use the upholstery for the seat and back for extra comfort.

The Heron can be delivered with the swing-away arm rests premounted. Use the arm rests for the purpose of

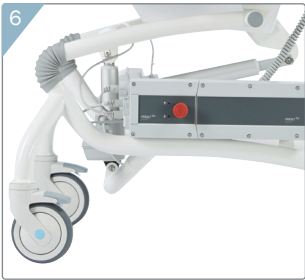
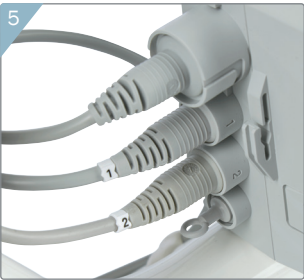
showering or toileting and swing them away when they are no longer required.

The Heron is available as a hydraulic or power version. Both contain the same features of height adjustment, tilt-in-space and back recline. For extra ease and comfort for the user and caregiver, we recommend using the power version.



[1] Heron, hydraulic version. [2] Handle for seat angle adjustment. [3] Handle for back recline adjustment. [4] Foot pedal for hydraulic height adjustment. [5] Heron, hydraulic version. [6] + [7] Arm rests, premounted, swing-away.

# Heron with power



[1] Charger, wall mounted. [2] Handle for back recline adjustment. [3] Remote for height and seat angle adjustments. [4] Heron with swing-away arm rests, power version. [5] Cables are marked with numbers. [6] Heron, power version. [7] Battery mounted on frame.

# Optimum positioning

The Heron is suitable for teenagers. Change the back height and add a couple of simple accessories to change seat width and seat depth – it is possible to make the Heron fit perfectly!



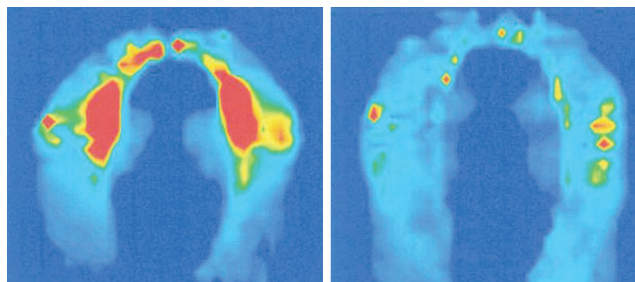
The height of the back can be adjusted to fit the user. It can be adjusted up to 7 cm by simply loosening four screws, repositioning the back and remounting the screws.

The Heron has a total seat width of 55 cm. By mounting hip supports, it is possible to give additional support in the range between 35 to 49 cm, ensuring a snug fit around the user's hip and thighs.

The 45 cm seat depth, which the Heron offers, can be on the large side for some users – in those cases it is possible to add a seat depth reduction kit. Two blocks are inserted behind the back, moving it forward and reducing the seat depth by five cm.



Pressure mapping was used when designing the Heron to minimise pressure and improve comfort for users even when the seat is used for extended periods of time. Upholstery can be fitted for added seating comfort.



# Simple daily adjustments

## Height adjustment



Heron with hydraulics: The seat height above floor can be adjusted from 51 to 78 cm  
Heron with power: The seat height above floor can be adjusted from 56 to 78 cm

## Tilt-in-space



The seat tilts from -5° to 25°

## Back recline



The back reclines from 90° to 120°





# Perfect working conditions

One of the great features of the Heron is the hydraulic or powered height adjustment and tilt-in-space which allows adjustment of the chair into the correct position and a reduction of the time spent in a twisted or awkward position.

In family homes where it is difficult to fit a ceiling track or a mobile hoist into the bathroom, simply place the user in the chair, move it to the bathroom area and bring it up to a convenient height for showering and reverse the process when the user needs to use the wash basin or toilet. This means that the need to transfer the user in the bathroom area, or even fitting a hoist in the bathroom at all, is eliminated.

With the Heron, all daily toileting activities is done in the same piece of equipment, minimizing the amount of transfers needed.

For transferring users in and out of the Heron we recommend Molift products.

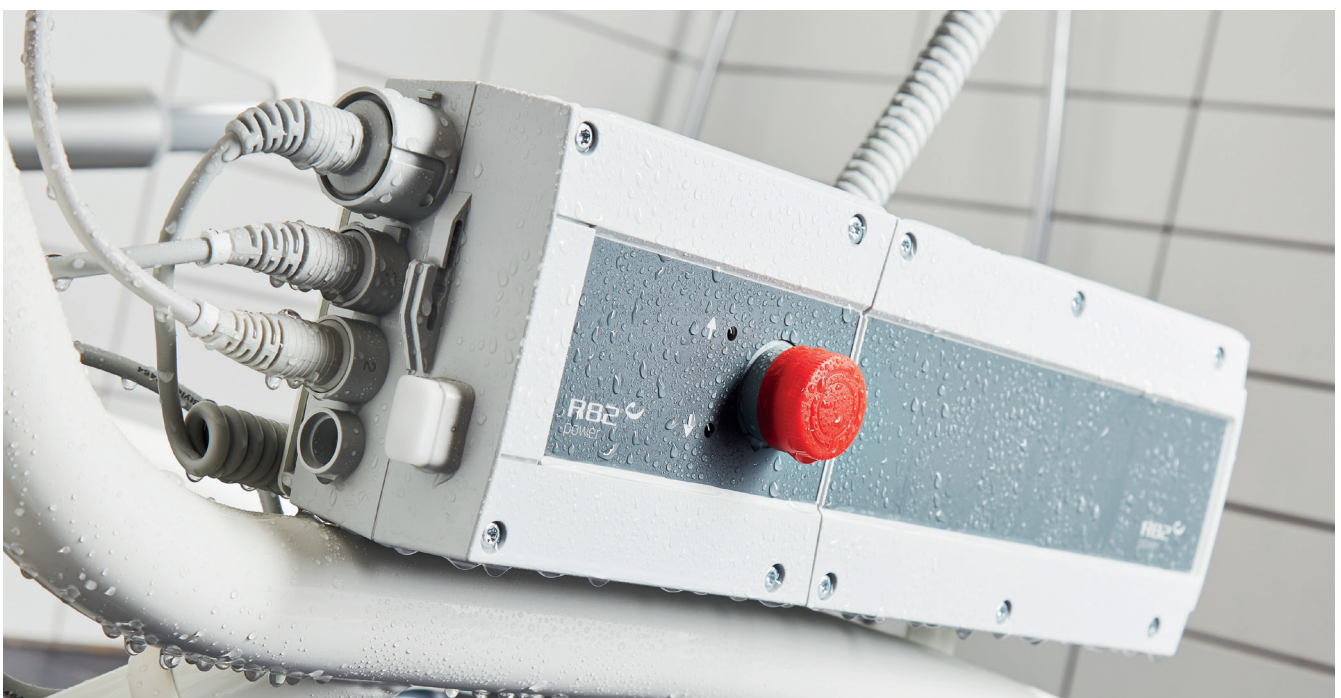


Read more about  
Etac - Molift, hoists and  
slings



# Washing & cleaning

The control box, battery and remote control are waterproof and can be used in all bathing and showering situations. Remove all accessories, unplug all cables and make sure to dismount the control box, battery and remote control before machine washing.



Washable at 85 °C in  
a washing machine  
designed for medical  
devices\*



\*Control box, battery & remote control must be removed before machine washing.

# Accessories

To add comfort and functionality to the Heron, a comprehensive range of accessories are available to fulfill the needs of the user and caregiver.

By providing the required support to the upper trunk, head and arms, the user is extra comfortable in the chair.

All accessories always come complete with installation hardware, making setup easy.

Upgrade the Heron by adding all sorts of useful functionalities with the right accessories.



## Checklist!

- Head support
- Side supports
- Shoulder supports
- Hip supports
- Arm rests
- Tray
- Pommel
- Commode pan
- Seat depth reduction kit
- Foot supports
- Calf support
- Heel stops
- Padding for foot supports
- Vests, belts and straps



**Head support**  
See accessories category on webpage



**Side supports, swing-away**  
See accessories category on webpage



**Fixed side supports**  
880508-09



**PU inlay/Shoulder supports**  
880507-04/880508-01



**Hip supports**  
880508-02



**Arm rests/Tray**  
880508-03/880508-04



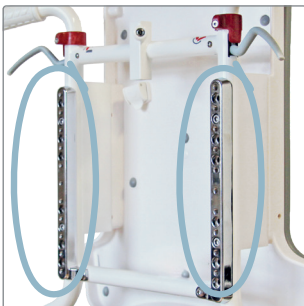
**Splash guard**  
880508-05



**Commode pan**  
880130

**Hip support spacer blocks**  
880508-02LB

**Lid for commode pan**  
880130-L



**Seat depth reduction kit**  
880508-06



**Calf support**  
880509-01



**Foot supports, right-angled knee**  
Short 880506-03  
Long 880506-01



**Foot supports, open knee angle**  
880506-02



**Heel stops**  
880509-02



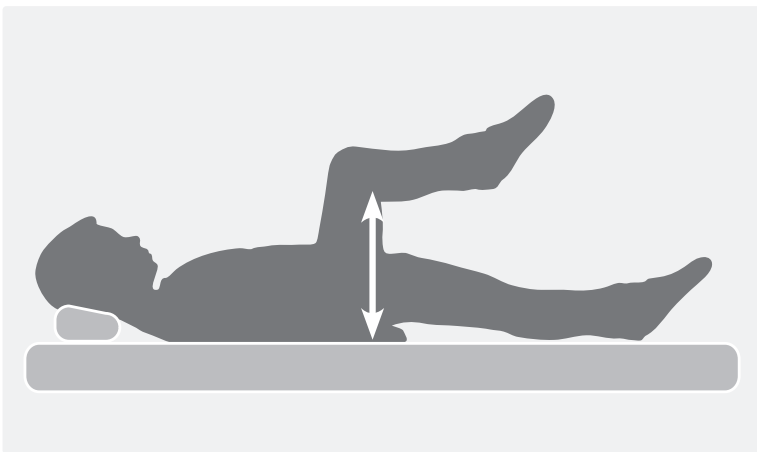
**Padding for foot supports**  
880506-12

For more accessories - visit our website

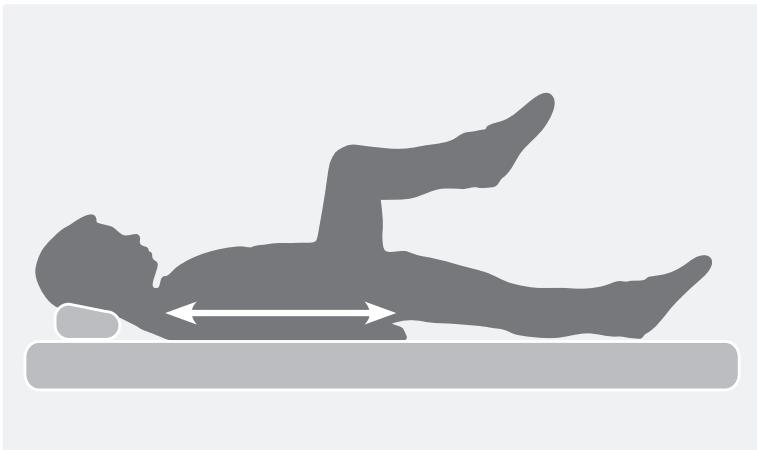
# Choosing the Heron

## A few simple measurements will tell you if the Heron will fit

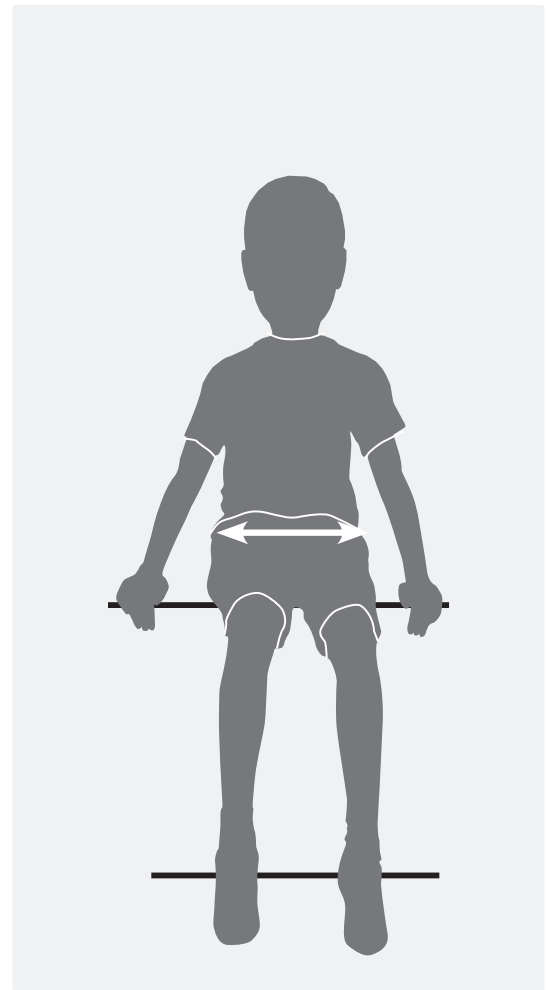
Use these simple measurements to find out if the Heron is the right toilet and bathing chair for the user. To measure accurately, always make sure that the user is sitting or lying on a firm flat surface with hips, knees and ankles at a 90° angle.



Seat depth



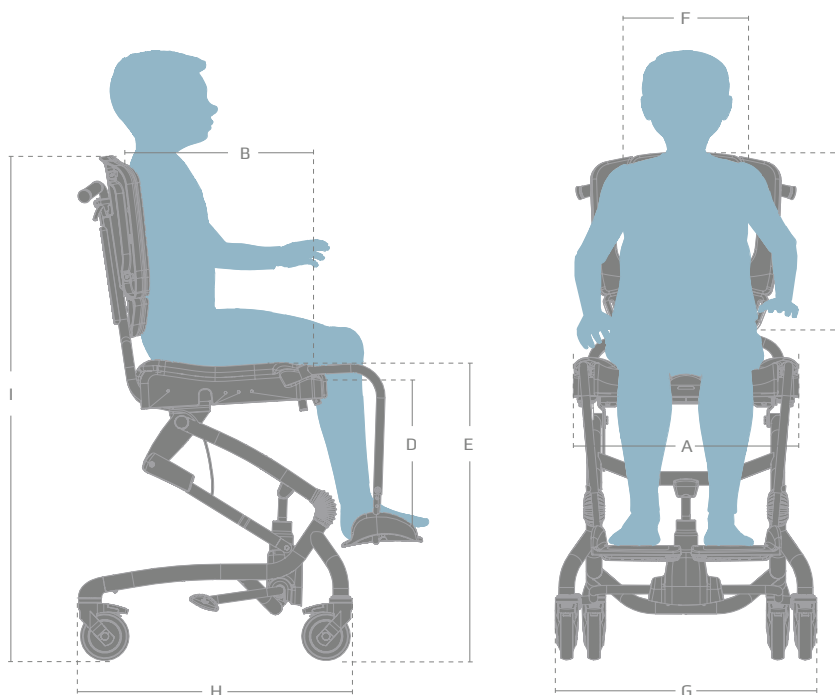
Back height



Hip width

# Measurements

The Heron is available in one size and is suitable for teenagers. Change the back height and add a couple of simple accessories to change seat width and seat depth – it is possible to make the Heron fit perfectly!



	Heron with hydraulics	Heron with power
Effective seat width (A)	550 mm	550 mm
Seat width between hip supports (accessories)	350 - 490 mm	350 - 490 mm
Effective seat depth (B)	450 mm	450 mm
Seat depth with reduction kit (accessories)	400 mm	400 mm
Backrest height (C)	555 - 625 mm	555 - 625 mm
Lower leg length (D)	400 - 560 mm	400 - 560 mm
Seat surface height at front edge (E)	510 - 780 mm	560 - 780 mm
Back width, top of backrest (F)	290 mm	290 mm
Overall width (G)	670 mm	670 mm
Length (H)	710 mm	710 mm
Overall height (I)	1080 - 1350 mm	1130 - 1350 mm
Seat plane angle	-5° -> 25°	-5° -> 25°
Back rest angle	90° -> 120°	90° -> 120°
Total mass	28 kg	31 kg
Max load	100 kg	130 kg





# “Hayla has beaten the world record”



Hayla Silva Søndergaard

These were the words of Herman Jensen, a mink farmer from Støvring, who was proud to have just seen Hayla Silva Søndergaard, his daughter beat the 800 metre record by a full two seconds.

»Sadly, the time is not official, as there was no electronic timing system in use today,« he explains. This does not mean that Hayla Silva Søndergaard is any less overjoyed and she insists on calling her mother right away to tell her the good news.

Due to a lack of oxygen during her birth, Hayla Silva Søndergaard suffers from spasticity. This means that she has constant spasms throughout her entire body and that her language is very limited. Therefore, Hayla speaks through a computer that she can control using her eyes.

The speech computer is an example of how her quality of life has improved significantly since she began Race Running.

When she started Race Running, she was fastened to her wheelchair with a belt around her waist and she did not have enough control to operate the speech computer.

»Race Running has given me greater calm in my body and better control«, she explains.

Hayla trains three times a week. She trains both on the athletics track and on the roads near the farm in Støvring, where she runs a lot at weekends when she visits her father.

We met Hayla on a perfectly ordinary morning at Odder Højskole. This tough young lady was getting ready for another day of activity, starting with lessons in the classroom and sports in the school hall later in the day.



Etac is a world-leading developer of innovative assistive devices and patient handling equipment. Since 1973, we have been committed to improving quality of life for the individual, family members and caregivers.

For the intended purpose of the products and latest information, please visit [www.etac.com](http://www.etac.com)

**R82 A/S**

 +45 79 68 58 88

 [R82@etac.com](mailto:R82@etac.com)

 [www.etac.com](http://www.etac.com)

  
Creating Possibilities