

OSKA Alto

Series3-V4





FAST

Our large warehouse and sophisticated fulfilment systems mean we can deliver with speed. This is supported by our online customer services, making it easy to track orders and re-order.

INTELLIGENT

Years of research and development have allowed us to find care solutions that are affordable, innovative and useful. Our products cover manual handling, pressure care and patient safety.

CARE

We know our products inside and out and we want to share this knowledge and expertise. We help our customers find the right care solutions, as well as offering ongoing training, support and product maintenance.



Prevention:	Very High Risk
Treatment:	Category 4
Comfort:	★★★★
Type:	Replacement

Features

- 20 air cells for increased comfort
- Welded seams for infection control
- CPR valve
- Cable tidy to save damage to wires
- Transport function
- Static cells in head end
- Quick connectors
- Static mode
- Auto firm mode
- 2 part cells for protection against deflation
- Anti deflation mode in event of power loss
- Self sealing connections in case of cell puncture
- Static air base for comfort, preventing "bottoming out" and remains inflated for X hours without power

SPECIFICATION

	SIZE
Single	88x200x20cm
King Single	105x200x20cm

This full replacement pressure relief system is used as an aid in the prevention and treatment of pressure damage up to and including category 4.

The outer cover is made from bi-elastic PU/Polyester coating which is a vapour permeable material and has elastic properties, allowing for interface movement to help lower the risk of shear damage.

The "easy-to-use" fully digital pump has very clear weight settings and alternating cycle settings.



DUAL CABLE MANAGEMENT

Cable management is standard on both left sides of the mattress.



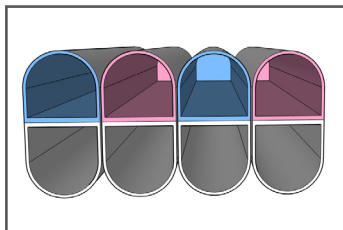
WELDED SEAMS

Regular sewn seams are ideal for bacteria to grow in because of all the holes. Welded seams are melted or welded together using high frequency vibrations meaning there are no holes or gaps for bacteria to get into. This helps reduce the spreading of infection.



WHISPER QUIET DIGITAL PUMP

Static mode, inflates all of the cells in the mattress and keeps them consistently inflated. Alternating pressure, alternates the inflation and deflation between the cells in an A/B pattern. Just 30 dBA!



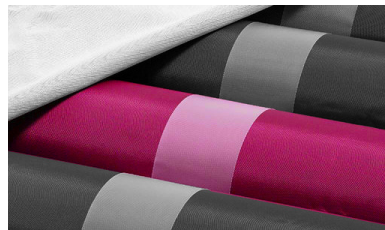
CELL IN CELL

50% of body is relieved. Static base to prevent "bottoming out."



SELF SEALING

In the unlikely even that a bladder/cell is compromised, simply disconnect & mattress will continue to operate normally.



REPLACEMENT CELL

Included FOC to reduce downtime & hassle.

The Ultimate Mattress Cover



Pressure Relief

The Aria+ mattress covers is designed to significantly reduce pressure ulcers. It has been designed to reduce friction and help disperse moisture, both of which are major contributing factors to the formation of pressure wounds.



Patient Comfort and Durability

The mattress cover technology provides,

- Multi stretch fabric
- The moisture vapour transfer allows for breathability
- Offer exceptional durability without compromising comfort.



Infection Control and Cleaning Regime

The Aria+ mattress cover technology incorporates infection control and Anti-decubitus characteristics. It provides an impenetrable barrier to viruses and bacteria. To clean, wipe down with warm water and mild detergent. If required, the cover can be machine washed <95 degrees Celcius. It can be cleaned with a chlorine-based chemical at <10,000 ppm concentration.



Legislation

The Aria+ mattress cover technology meets the latest legislative requirements including:

- DecaBDE and Halogen-free
- Reach and ROHS compliant
- Biocidal Products Regulation compliant
- Flame retardant cover



Technical Specification Summary

- Hydrolysis resistance >1 year
- Excellent resistance to active chlorine
- Anti-decubitus
- FR to BS7175 Crib 5 / Crib 7 variant available
- Autoclave resistant
- Dry cleanable
- Washable to 95 degrees Celsius
- Antibacterial and Antifungal treated
- HF weldable
- MVP (moisture vapour permeability)
- WPR <5m (water penetration resistance)

With no clear algorithm or selection guide it can be difficult to know what mattress you should be selecting for your patients.

Although the European Pressure Ulcer Panel (EPUAP 2014) gives an overview which is currently followed in clinical practice, for up to a Category 2 pressure ulcer when the client is able to reposition, or an air mattress is contraindicated, a non pumped system may be used.

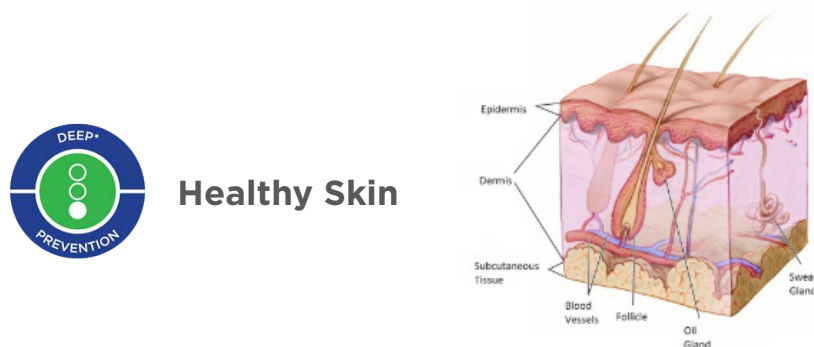
For those with deep tissue injury, or category 3 or 4, a pumped system should be considered to support the underlying circulation and intermittent offloading of the bony prominences between turns.

To make this clear OSKA have devised a system, the OSKA SELECTOR™, to help carers identify if the patient is on the correct mattress.

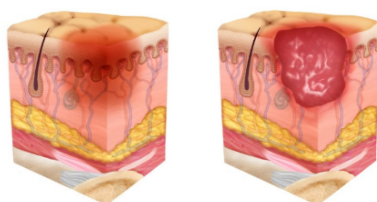
Where assessment and reassessments of risk for patients must be done holistically by a clinician, the dot system aims to serve as a guide or prompt.

Please note that no support surface can replace turns or repositioning which are still mandatory for those at risk as per the NICE guidelines (NICE 2015).

Categorization of pressure ulcers*



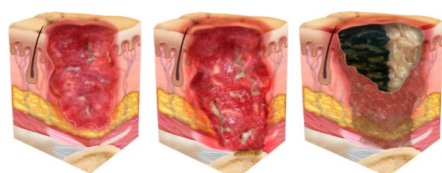
Superficial Category 1-2



- Intact skin with non-blanchable redness of a localized area usually over a bony prominence. Other signs of the area such as discoloration, oedema, warmer or cooler as compared to adjacent tissue may also indicate pressure injury. (Category 1 may be difficult to detect in individuals with dark skin tones. May indicate “at risk” persons.)
- Damage to the epidermis and/or dermis. The ulcer is superficial and may be visible as a blister on or an abrasion of the skin.



Deep / Unstageable Category 3-4



- Involves damage to the full thickness of the skin and includes injury to, or necrosis of, the subcutaneous tissue layer, and may extend down to but not through the underlying fascia.
- Deep tissue damage, necrosis or damage to the muscle, bone or connective tissue with wound cavitations.
- Full thickness skin and tissue loss in which the extent of tissue damage within the ulcer cannot be confirmed because it is obscured by slough or eschar. If slough or eschar is removed, a Stage 3 or Stage 4 pressure injury will be revealed.

The 3E Philosophy

Enable Lifecare deliver specialist care products that give healthcare professionals the ability to make a difference. We are continually developing pressure care products that perform and are beneficial to patient's clinical needs.

Every patient has individual needs. That's why our 3E solution help us to help you deliver the highest standard of care possible.



Empathy

We strive to fully understand our clients to gain a holistic understanding of their situation, feelings, and goals. Providing the best solution goes beyond choosing the therapeutic device for a specific medical condition. Care, context and understanding are paramount to delivering the best outcome.

Evaluation

Choosing the perfect product for someone requires more than a gut feeling. Our 3E Philosophy means we consider every aspect of our clients and how the product can work for them. No two people are the same, so we evaluate how each feature can benefit the client.

Effectiveness

Finding the most effective solution for our clients is determined by the first two E's, Empathy and Evaluation, and adding our expert knowledge, science and application experience. With our client's requirements top of mind, our 3E philosophy seeks to provide a holistic outcome to improve their quality of life.



At Enable we source quality, affordable and innovative products globally and have them available for fast delivery. But we do more than just provide products.

We give the knowledge and support to help our customers grow their business and deliver better life care.



ENABLE LIFECARE PTY LTD

T 1300 370 370

enablelifecare.com.au